



NOTTINGHAM TRANSPORT HERITAGE CENTRE

16th & 17th of May 2026

MERE WAY RUDDINGTON NG11 6JS



Featuring Middleton!

MODEL RAILWAY EXHIBITION

Show Guide

Welcome to the 2026 Nottingham Transport Heritage Centre Ruddington Model Railway Show

The weather is getting warmer, and the grass is getting greener, so that can only mean one thing! The annual Model Railway Exhibition, brought to you in partnership with Nottingham Model Railway Society, is back at the Nottingham Transport Heritage Centre Ruddington for another year! Once again we are using new exhibition hall, so we have a great deal of display space. Our wonderful displays are spread out over 10,000 square feet, crammed full of everything model railway related. This makes it one of the largest shows in the East Midlands region, with over forty exhibitors. We have brought together twenty British, Continental, and American layouts of all gauges and eras for you to enjoy, and we also have a good selection of trade stands for all your modelling needs, and to expand your collection, as well as demonstrations of 'how to'. Our friends from Accurascale UK are here with their latest exciting projects, along with all our usual traders that you have come to know, with lots of items to tempt you! Please support them. Come along, bring the family, and come down to see the action.

Other Heritage Centre attractions are open as usual. The Nottingham Society of Model and Experimental Engineers (NSMEE) miniature railway will be offering rides on both Saturday and Sunday. The Great Central Railway Nottingham (GCRN) are back operating their full-size trains. The Heritage Café will be open both days from 9 am, so you can pop in get all the refreshments you need to fuel your day of fun filled trains, transportation, and more! See further <https://gcrn.co.uk/events> for this and other events at the NTHC.

This year we have the added treat of *Flying Scotsman* and *Tornado* on site. *Tornado* will be hauling steam trains down to Loughborough, whilst *Flying Scotsman* is available for footplate visits. A full-sized Ruston 88 DS shunter will be at one end of Hall 2.

This guide is designed to be viewed on a smart phone or tablet, and is not available in print. This enables us to include colour pictures, and material that is not possible in print, such as website links.

We hope you will be inspired to extend your interest in this creative hobby. If so, you would be well advised to join with like-minded modellers at your local club. Here at the NTHC we have the Ruddington Model Railway Club on site. There is also the Nottingham Model Railway Society, with their own clubrooms in the Mapperley area of the city, where they meet every Tuesday evening. Please see the adverts at the end of this guide.

Thanks are due to all the exhibitors who have supplied photos and text for this Show Guide, and thank you for supporting the Model Railway exhibition. We'd also like to thank the Nottingham Area Bus Society (<https://www.facebook.com/NABSRuddington/>) for once again allowing us to use their shed for the show.

If you'd like your layout to be considered for a future NTHC show, please contact nthcmrx@gmail.com.

Show Opening Hours

Saturday 16th May 2025 10:00 – 17:00

Sunday 17th May 2025 10:00 – 16:00

Venue

NTHC Ruddington – Nottingham Transport Heritage Centre (<https://nthc.info/>), Mere Way, Ruddington, Nottingham, NG11 6JS

Admission

Adults £8.00. Children 5-16 £2. Accompanied under 4s FREE. Card payments are available. Major debit cards (MasterCard/Visa, etc.) accepted.

Fully wheelchair accessible.

Venue amenities: refreshments.

Car Parking

Parking on site: £3 per vehicle. This is to help towards the upkeep of the site. Card payments are available. Parking will be available on site and at our neighbours VisionExpress, opposite Rushcliffe Country Park, and Ideagen, which is located at the top of Mere Way, close to the A60. Please note that, due to the presence of *Flying Scotsman* and *Tornado*, the site is likely to be very busy.

Getting here



Public transport:

If you are travelling by train – Nearest railway stations are Beeston (<https://www.nationalrail.co.uk/stations/beeston/>) [3.6 miles], Nottingham (<https://www.nationalrail.co.uk/stations/nottingham/>) [4.32 miles], East Midlands Parkway (<https://www.nationalrail.co.uk/stations/east-midlands-parkway/>) [4.67 miles], and Attenborough (<https://www.nationalrail.co.uk/stations/attenborough/>) [5.12 miles], all served by East Midlands Railway (<https://www.eastmidlandsrailway.co.uk/>). We recommend travelling to Nottingham and then proceeding by bus (see below).

If you are travelling by bus from Nottingham city centre – Nottingham City Transport (<https://www.nctx.co.uk/>): Saturday, Nos. 3, 3A or 10 to Ruddington Green, then 19-minute walk down Asher Lane and through Rushcliffe Country Park; Sunday, No. 10C to Rushcliffe Country Park. Kinchbus (<https://kinchbus.co.uk/>): (both days) No. 9 to Scout Hut, then 12-minute walk down Mere Way. All buses call at Nottingham Railway Station. This OnBus link may help: <https://bus.traveluk.info/index.php/stop-finder?postcode=NG11%206JS>.

This area of Nottingham is not served by tram.

If you are travelling by car – Take the M1, leave at Junction 24, take the A453 (Remembrance Way) towards Nottingham, then onto Green Lane in Clifton Village, towards Ruddington (becomes Clifton Lane, then Clifton Road), right at the Victoria Tavern onto B680 (Wilford Road/Dutton's Hill/High Street), follow B680 left at the Frame Breakers (Kirk Lane), right at traffic lights onto A60 (Loughborough Road), right at roundabout onto Mere Way, and right at next roundabout.

For driving directions, check Open Street Map:

<https://www.openstreetmap.org/?mlat=52.884593000000000&mlon=-1.146398000000000&zoom=12#map=15/52.88459/-1.14640>

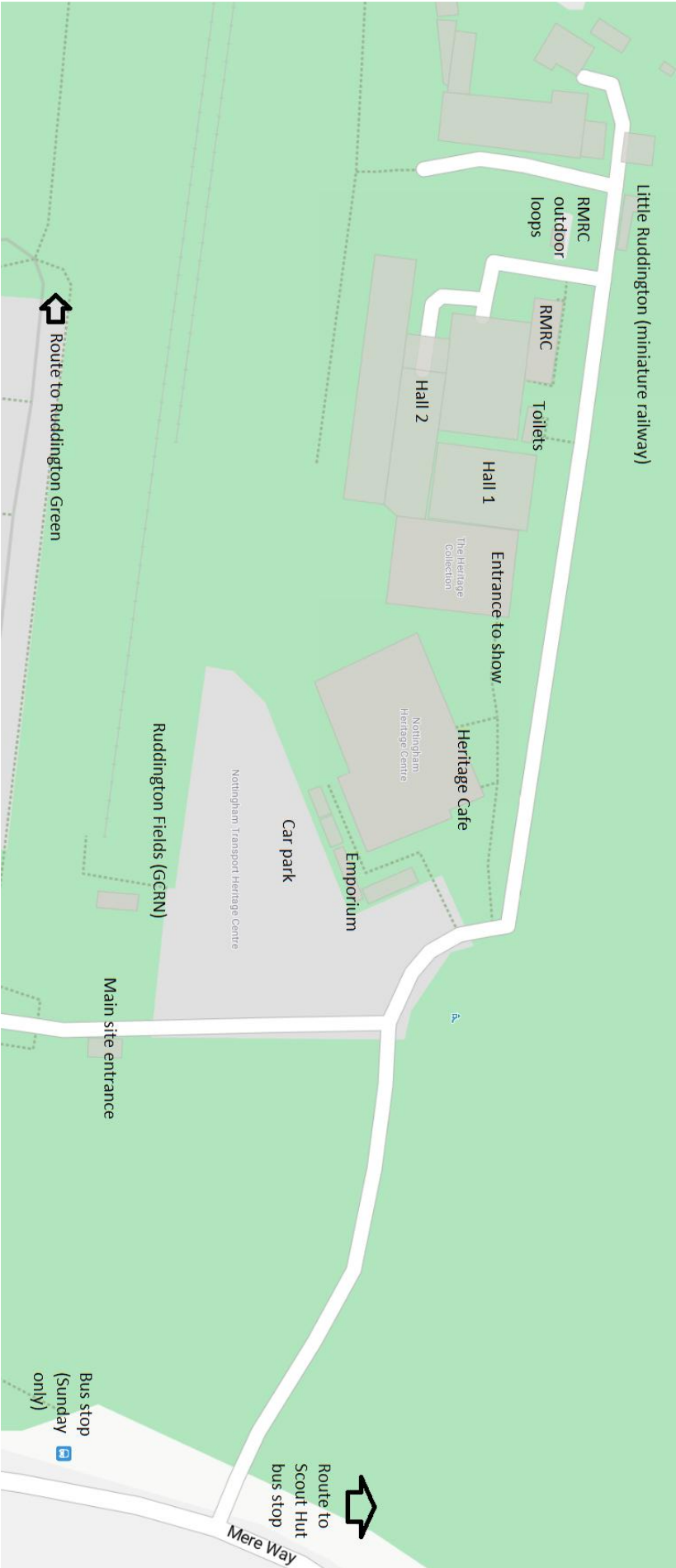
Google Maps:

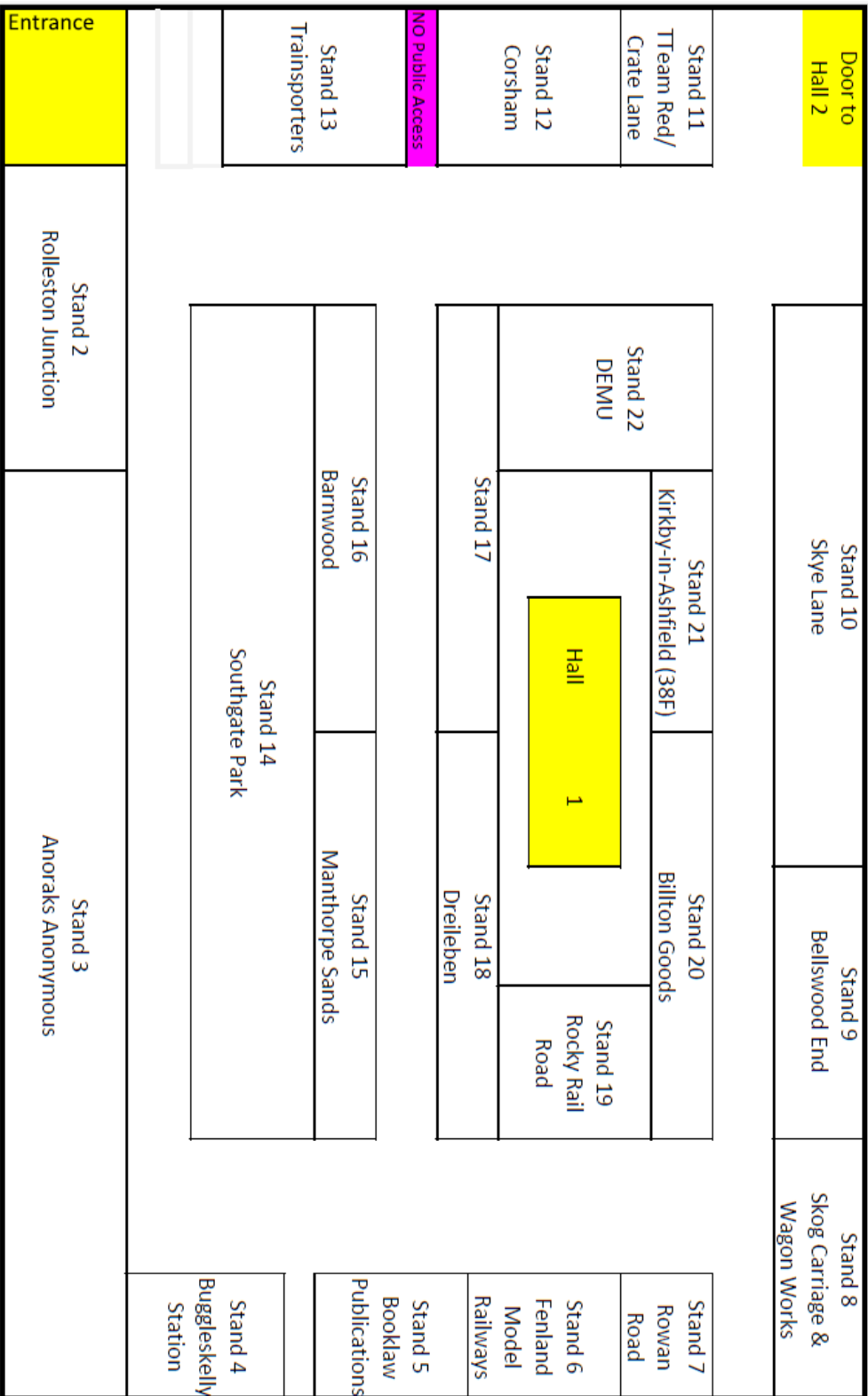
<https://www.google.com/maps/search/?api=1&query=52.884593000000000,-1.146398000000000>

Bing Maps: [https://www.bing.com/maps/?v=2&cp=52.884593%7E-](https://www.bing.com/maps/?v=2&cp=52.884593%7E-1.146398&style=r&lvl=12&sp=Point.52.884593000000000-1.146398000000000)

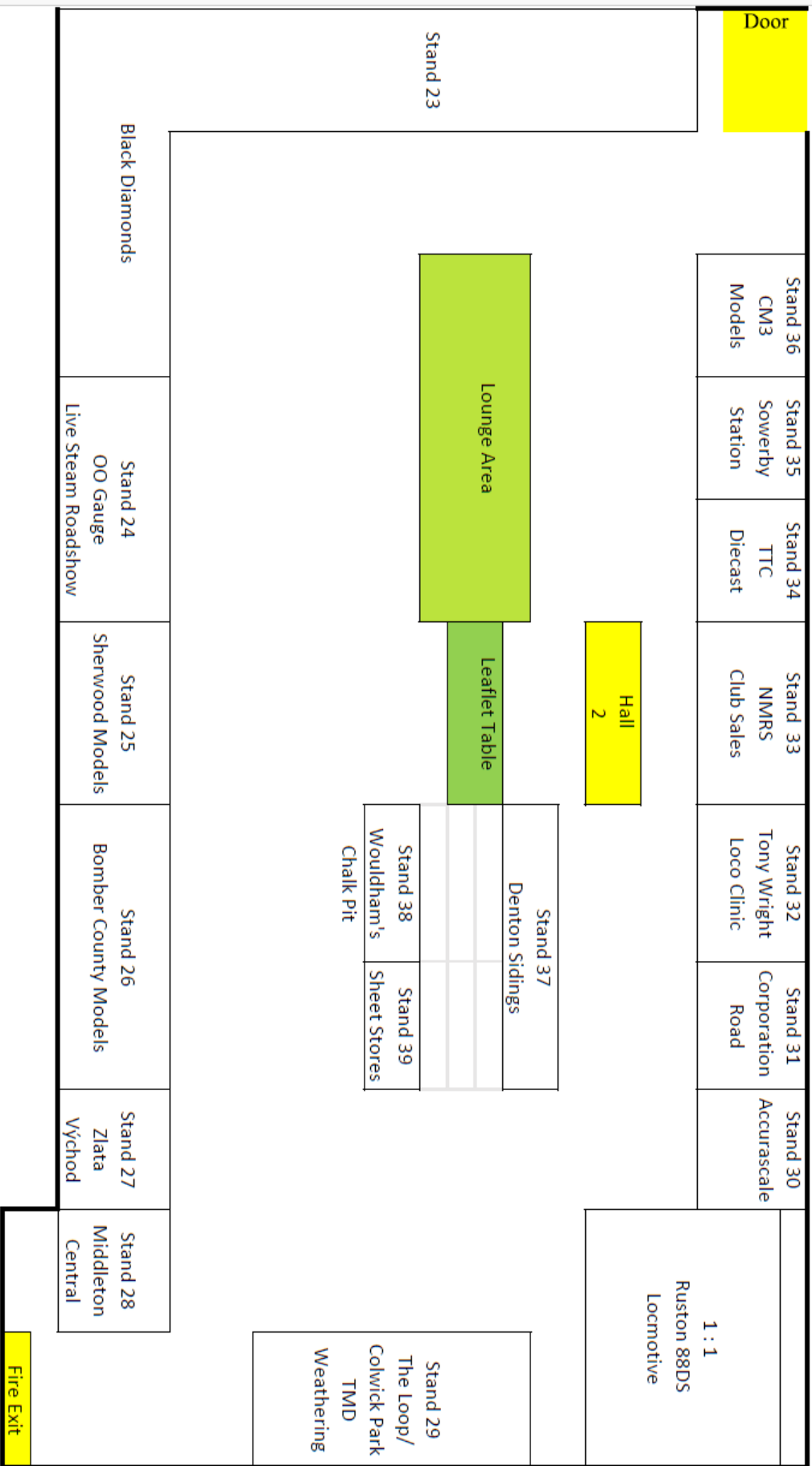
[1.146398&style=r&lvl=12&sp=Point.52.884593000000000 - 1.146398000000000](https://www.bing.com/maps/?v=2&cp=52.884593%7E-1.146398&style=r&lvl=12&sp=Point.52.884593000000000-1.146398000000000) Nottingham+Transport+Heritage+Centre+2026+Model+Railway+Exhibition

Check here for the What3words link: <https://what3words.com/again.rams.draw>.





(Not to scale)



(Not to scale)

Stand Numbers

Entrance Hall

1. Pay Desk & LMS-Patriot Company

Hall 1 (NABS Shed)

- | | |
|--|------------------------------|
| 2. Rolleston Junction | 12. Corsham |
| 3. Anoraks Anonymous | 13. Trainsporters |
| 4. Buggleskelly Station — Scale Models by Tom Marshall | 14. Southgate Park |
| 5. Booklaw Publications | 15. Manthorpe Sands |
| 6. Fenland Model Railways | 16. Barnwood |
| 7. Rowan Road | 17. |
| 8. Skog Carriage and Wagon Works/Rob Law | 18. Dreileben |
| 9. Bellswood End | 19. Rocky Rail Road |
| 10. Skye Lane | 20. Billton Goods |
| 11. TTeam Red/Crate Lane | 21. Kirkby-in-Ashfield (38F) |
| | 22. DEMU |

Hall 2 (Building No. 4)

- | | |
|--|--|
| 23. Black Diamonds | 32. Tony Wright's Loco Clinic |
| 24. OO Gauge Live Steam Roadshow | 33. Nottingham Model Railway Society (NMRS) Club Sales |
| 25. Sherwood Models | 34. TTC Diecast |
| 26. Bomber County Models | 35. Sowerby Station |
| 27. Zlata Východ | 36. CM3 Models |
| 28. Middleton Central | 37. Denton Sidings |
| 29. The Loop/Colwick Park TMD Weathering | 38. Wouldham's Chalk Pit |
| 30. Accurascale | 39. Sheet Stores |
| 31. Corporation Road | |

Ruddington Model Railway Club (beyond the halls, towards the far end of the site)

- | | |
|-------------------------------|---|
| 40. Ruddington MRC Club Rooms | Ellis Road |
| Ruddington | International Conference Centre |
| Millhouse Lane | 41. Ruddington MRC Barry's Island (Outdoor Model Railway) |
| Sodor | |

Layouts

Middleton Central	10
Rolleston Junction	12
Rowan Road	13
Bellswood End	14
Skye Lane	15
TTeam Red/Crate Lane	17
Corsham	19
Southgate Park	20
Manthorpe Sands	22
Barnwood	24
Dreileben	25
Rocky Rail Road	26
Billton Goods	28
Kirkby-in-Ashfield (38F)	30
Black Diamonds	32
OO Gauge Live Steam Roadshow	34
Zlata Východ	35
The Loop/Colwick Park TMD Weathering	37
Corporation Road	37
Sowerby Station	39
Denton Sidings	40
Wouldham's Chalk Pit	42
Sheet Stores	43
Ruddington Model Railway Club Layouts	
Ruddington	45
Millhouse Lane	46
Sodor	47
Ellis Road	48
International Conference Centre	49
Barry's Island	49

Featured Layout

Middleton Central

Stand: 28 (Hall 2)
Owner: Model Rail Projects Group
Period: Late 1970s/early 1980s
Scale: OO (16.5mm gauge, 4mm:1ft/1:76 scale)



Middleton Central is a small terminus station in the Manchester area, with a DMU stabling point, and a factory for freight deliveries, set in the BR blue period, though it can be operated with more modern stock. Operation is DCC.

After the success of their first layout, Depot Lane, the MRPG embarked on a larger project, originally called Westfield. They wanted to have a station layout that allowed plenty of movements, looked good and didn't cost the earth. They started with C.J. Freezer's 'Minorities' plan, and after a few adjustments, came up with the current scheme.

The fiddle yard was designed so it can be used on future projects as well. The boards are self-contained, so that, when attending shows, the layout can be set up and packed away quickly.

The buildings for the back scene are scratch built, and some have interior lighting. The DMU stabling sidings have fuelling facilities. The tanks are made from an old

drain pipe, with the loading area details from a Knightwing kit. Some modified Portakabins are used for the crew mess rooms. Next to these is a new office building. The layout is full of small details which are worth looking for.



Learn more about the history of Middleton Central at RMWeb:
<https://www.rmweb.co.uk/topic/135216-middleton-central/>.



Other layouts

Rolleston Junction

Stand: 2 (Hall 1)
Owner: Bingham Model Railway Club
Period: Late 1950s to early 1960s
Scale: OO (16.5mm gauge, 4mm:1ft/1:76 scale)



Rolleston Junction is modelled on a real station, located at a busy intersection, where a line from Mansfield and the North Notts coal field joins the old Midland Nottingham to Newark Line. The Mansfield branch closed in 1983 when the coal-fired Staythorpe power station closed. Passenger traffic had ceased earlier, in the 1960s. There is still a station on the site, but the junction part of name was dropped when the Mansfield line closed.



The layout is 4.8m by 1.2m, and comprises eight boards. We have modelled the junction track plan as it was in the late 1950s to the early 1960s. The station is, in reality, half a mile from the village of Rolleston, so the only buildings present are the station building itself, a shelter on the down line from Mansfield and another on the

up line to Nottingham, the station master's house, and an old watermill and stable, which at the time depicted were derelict, this is modelled in low relief. The track is raised above the Trent flood plain, which is shown as marshy.

In operation, most of the traffic on the Mansfield branch will be full coal trains from Mansfield, with empties returning. Passenger traffic on the branch will consist of two coaches pulled by a tank loco, or a two-car DMU. A variety of goods trains carrying minerals that were extracted in the area will be featured, plus goods trains carrying general merchandise. A stream of local stopping trains, steam and diesel, will stop at the station plus through fast and semi-fast trains.

For more information and pictures, see <http://www.bingham-model-rail.co.uk/rolleston.html>.

Rowan Road

Stand: 7 (Hall 1)
Owner: Alan Clegg
Period:
Scale: OO (16.5mm gauge, 4mm:1ft/1:76 scale)



Rowan Road is a small terminus station in a northern town, close to Greater Manchester, served primarily by elderly first generation DMUs with occasional parcel workings and light engines appearing; the layout is set in the mid-1980s. The layout

is a fiddle yard to terminus type, but is operated using a sector plate to gain access from one to the other. It is DCC controlled, and operates some sound fitted locos.



Bellswood End

Stand: 9 (Hall 1)
Owner: Rob Hambridge
Period: Present day
Scale: OO (16.5mm gauge, 4mm:1ft/1:76 scale)



Making its debut at this show, Bellswood End is a small station located somewhere in the heart of Birmingham, just outside New Street, on one of the Cross-City lines to the north, set up as a single line with a siding that stores locomotives and rolling stock that's needed for New Street. Set on a summer's evening the layout is fairly unique as it's set in the night, using the street lights to help illuminate the scene. The buildings are run down, there's graffiti, and the people are up to no good.

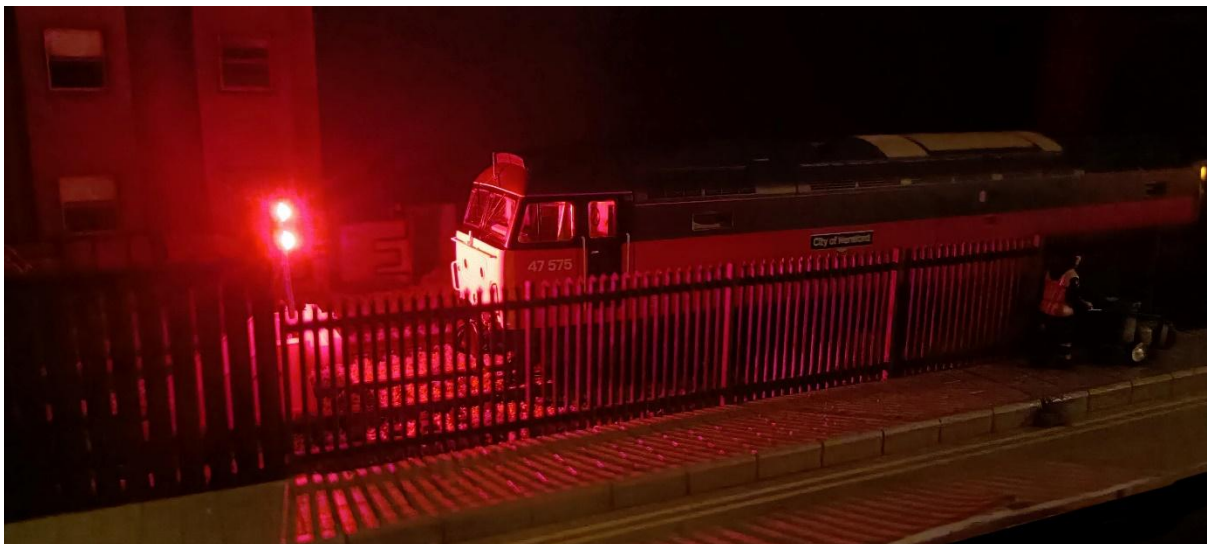
The layout is built on spare pieces of wood Rob had lying around. The baseboard is 18mm MDF with a traditional timber frame. The scenery is fairly minimal, with the

traditional Woodland Scenics ballast and foliage to help give the layout a run-down urban look. The buildings are mainly kit/card kits from Scalescenes and Model Railway Scenics, with the platforms and OHLE from West Hill Wagon Works. Parts were also acquired from Bunters Yard, with some Bachmann and Modelu figures.



All the major rolling stock manufacturers are represented on the layout, with second generation DMUs and EMUs. It was actually built specifically for Dapol's Class 323. The layout is run on a Gaugemaster Prodigy 2 DCC system, for ease.

You can find out about this and other layouts Rob has built at the Baggies TMD pages on both YouTube (<https://www.youtube.com/@BaggiesTMD>) and Facebook (<https://www.facebook.com/Baggiestmd>).



Skye Lane

Stand: 10 (Hall 1)
Owner: Howard Jones
Period: Late 1960s/1970s
Scale: O (32mm gauge, 7mm:1ft/1:43 scale)

Skye Lane is a fictional terminus station, with a goods depot. It is based loosely in the late 1960s/1970s, allowing the depiction of the end of steam, and green and blue diesels to be run.





TTeam Red/Crate Lane

Stand: 11

Owner: Dave Bates

Period: TTeam Red: 2000–2015; Crate Lane: 1975–1981

Scale: TT (12mm gauge, 2.5mm:1ft scale [TTeam Red]/3mm:1ft scale [Crate Lane])



TTeam Red is a TT:120 micro-layout with a scenic board, based on a plywood base and hardboard back scene, running into a fiddle area serviced by cassettes. It is inspired by Tees Yard wagon repair depot, but the actual model itself is a geographic

nomad, so plausible in most areas. While principally built as and run as TT:120, with the stock roster based on DB Schenker/Cargo *circa* 2015, the stock can be changed completely to alternatively run a TT:100 (3mm scale) EWS setting, *circa* 2000.

The scenic structures and concrete ground cover are mostly scratch built, with a lot of the detail/clutter being proprietary 3D print items. TT:120 Traction and rolling stock are mostly Hornby ready-to-run, except the Class 60 which is a 3D print kit. TT:100 (3mm) traction and rolling stock are not available as proprietary ready-to-run; these are a mixture of either 3D print or resin cast kits, or 3mm Society sourced plastic kits.

Control is analogue/DC, with switched isolating feeds. More details can be found on the layout's RMWeb topic: <https://www.rmweb.co.uk/forums/topic/188667-tteam-red/>.

Crate Lane is a TT:100 (3mm scale) display diorama, based on foam board construction. It started to be built originally as a pure two level stock display stand, but it was then completed as a scenic diorama.

It is very generic and is a geographic nomad, so suitable for showcasing a variety of stock. The core era displayed is 1975 to 1981, the BR blue diesels era. The traction and rolling stock are not available as proprietary ready-to-run; they are a mixture of either 3D print or resin cast kits, or 3mm Society sourced plastic kits.

The scenics/structures are all scratch built. The layout is dead rail only, i.e. an unpowered display diorama. More details can be found on the diorama's RMWeb topic: <https://www.rmweb.co.uk/forums/topic/179916-crate-lane-diorama/>.



Corsham

Stand: 12 (Hall 1)
Owner: Martin Reynolds
Period: Mid-1970s
Scale: N (9mm gauge, 2mm:1ft/1:148 scale)



Corsham is a fictitious N gauge layout, based on the geographical area of Corsham in Wiltshire. It is set during the mid-1970s, with traffic predominantly hauled by BR Western Region diesel hydraulics, while a number of inter-regional workings can also be viewed.

The station features two island platforms, allowing for slow stopping passenger and freight services to be held off the mainline for the passage of fast passenger express trains. Close to the main station is a newly constructed Traction Maintenance Depot (TMD), to undertake servicing of locomotives whilst the old goods yard is still busy, helping with the movement of livestock, freight and the local coal merchants.

The layout is fully DCC operated, with a number of sound fitted locomotives used. The 4-aspect working LED light signals are all automatically controlled by the passing trains, and all points are servo operated using a Megapoints control system. The layout has a number of additional light features.

Started as a project during lockdown, Corsham joined the exhibition circuit in 2025. The team try and ensure that there is always something moving on Corsham, so come and watch the trains go by.



Southgate Park

Stand: 14 (Hall 1)
Owner:
Period: 1986–1992
Scale: OO (16.5mm gauge, 4mm:1ft/1:76 scale)



Southgate Park is a 4mm OO gauge layout based on a section of the South Western division of the Southern Region of British Rail, set in the period 1986–1992, the best years of Network SouthEast, when slam door EMUs and loco hauled trains were king! Southgate Park is located on the South Western division mainline of the Southern region, somewhere in the county of Surrey. The station architecture is classic 1930s art-deco, with the main building and station entrance at road level. Access to the platforms is via the main building, with subways between the four platforms.

The station is served by local services from Waterloo, some of which terminate and stable here, with semi-fasts and Network Express services from Waterloo, Basingstoke/Guildford, and Salisbury. These form the core services, utilizing a

variety of inner suburban HAPs, VEPs, and 455s, and outer suburban and express CIGs BEPs, REPs, TCs, and 442s with loco-hauled Salisbury/Exeter services. Freight services from Southampton, the Southwest and the Midlands pass through, along with a steady stream of engineering and departmental trains.



For more information and images, see the layout's Facebook:
<https://www.facebook.com/southgatepark>.



Manthorpe Sands

Stand: 15 (Hall 1)
Owner: Ian Hides
Period: 1968–2023
Scale: OO9 (9mm gauge, 4mm:1ft/1:76 scale)



Manthorpe Sands is a fictitious narrow-gauge railway that could have existed outside Grantham. It is dedicated to Ian's late parents who, when he was a young boy, told him of the story of Manthorpe Sands, a village just outside Grantham. The land where the East Coast Main Line runs is very sandy, hence it receiving that name. The layout also reflects Ian's fascination with railways and steam rallies, and his support of the RNLI.

A journey along the line takes the passenger from the busy main station at Manthorpe, with its engine sheds and engineering depot, through winding countryside, passing the local steam and vintage vehicle rally, and the carriage sheds, and reaching the coastal town of Peascliff, with its small harbour and lifeboat station, shops, cafés, pub, and nightclub. Here the train terminates, before making its way back to Manthorpe.

For more information and images, see the layout's Facebook group:
<https://www.facebook.com/groups/1704980963334701>.



Barnwood

Stand: 16 (Hall 1)
Owner: Andrew Fardell
Period: Early 1990s
Scale: N (9mm gauge, 2mm:1ft/1:148 scale)



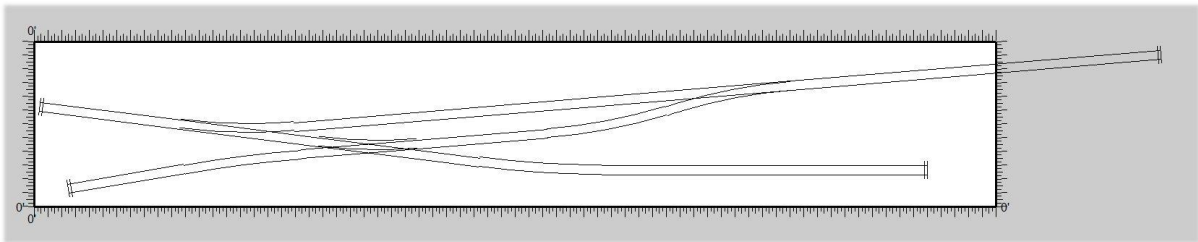
Barnwood is a fictional location in northwest England on a loop line off the West Coast Main Line, between Preston and Lancaster. It is on the coast, with a small port with regular connections to the Isle of Man and Northern Ireland. The town is busy with passing freight, as it acts as a second route between Preston and Lancaster, relieving pressure on this two track section of the West Coast Main Line. Passenger services are worked by Regional Railways trains running to and from Preston and Barrow-in-Furness. There is a short branch line that runs to the station at Glasson on the estuary of the River Lune. A freight only branch from Barnwood leads to RMC Bowland quarry, British Coal Knott End colliery and Garstang Power Gen power station.

The port has a container terminal, a grain terminal, and a steel terminal, with appropriate ships at the quayside. Other freight terminals within the town are an oil terminal, a large warehouse, a cement terminal, and a siding for the transshipment of logs. There is also a Royal Mail terminal, and a small loco depot adjacent to the station. Around thirty different trains can be run on the layout, from off-scene storage yards.



Dreileben

Stand: 18 (Hall 1)
Owner: Nick Palette
Period: Late 1980s
Scale: HO (16.5mm gauge, 3.5mm:1ft/1:87 scale)



Dreileben is a small HO scale layout, based on a fictitious location in Sachsen-Anhalt, in the former East Germany. It is set in the late 1980s, shortly before the demise of the Deutsche Demokratische Republik and German reunification.

It portrays the end of a rural branch line and shows short freight and passenger trains typical of the era and region. The layout is dominated by two large structures—a factory in the background which isn't rail served, and a grain silo which is rail served.

A mixture of steam and diesel traction is used. All locos and stock are from the major European manufacturers, especially Roco and Piko.

The trackplan is based on a classic design which has been used many times in different guises. It was originally devised by the late Jack Trollope ('Shortliner' on many social media platforms).

The layout is operated by DCC, but the turnouts are hand thrown for simplicity.



Rocky Rail Road

Stand: 19 (Hall 1) Owner: Ivan Pulfrey Period: Unspecified Scale: N (9mm gauge, 2mm:1ft/1:160 scale)

Rocky Rail Road came to the Nottingham Model Railway Society as a complete layout. It has probably had more than one previous owner, as it would have been difficult to build. It had many small details, but these had subsequently been smothered in lichen. Removing the lichen was a journey of discovery, with the family of bears, some of the deer, and the upper campers being three of the items found. The Bristlecone Pine was Ivan's addition. The stock is American and very random; the main criteria being that it must be cheap.



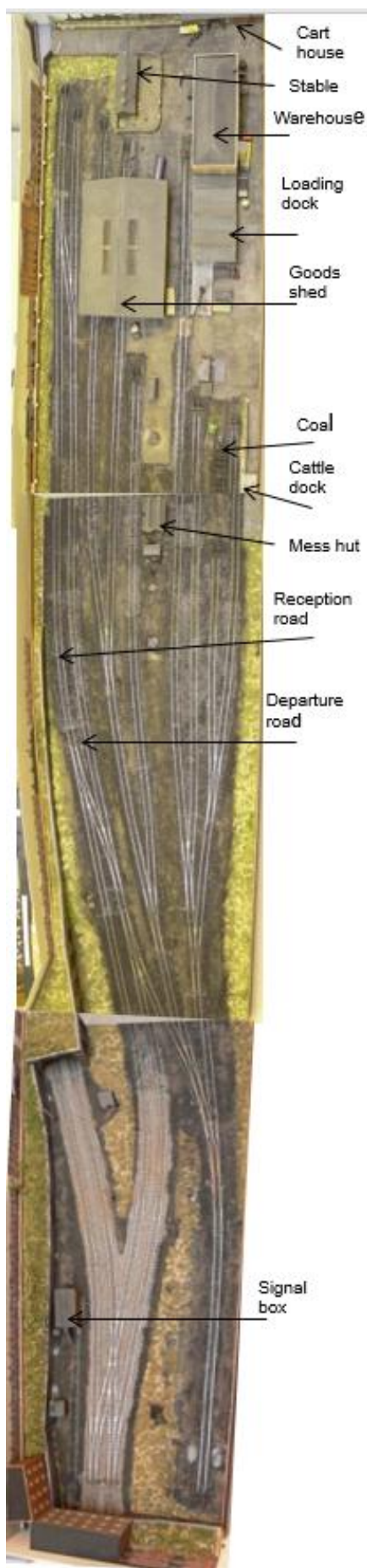


Billton Goods

Stand: 20 (Hall 1)
Owner: Tony Briddon
Period: Early 1950s
Scale: TT (12mm gauge, 3mm:1ft/1:101 scale)

Billton Goods portrays a typical ex LNWR/LMS goods depot as operating in the early 1950s. Horse use is becoming rare, Scammel Scarabs and Bedfords are common, and HGVs are mostly operated by the nationalised British Road Services (BRS).





The layout depicts the working of a typical ex-LMS goods depot of the period. Short freights from the nearest marshalling yard are 'tripped' to the depot. The loco shunts the depot and returns with wagons for forwarding. Whilst this is happening, parcels, mineral, and passenger trains pass on the mainline. The aim is to portray as accurately as possible railway operations of the period, and the grimy, sooty conditions prevailing on the railways in the early 1950s. The inclusion of a short stretch of main line permits the operation of a wide variety of locos and rolling stock.

All track, structures, engines, and rolling stock are handmade—the only items on the layout not handmade are the figures. All the buildings are modelled on prototypes, being replicas of, or closely based on, actual buildings, mostly from the Northampton area; in particular, the signal box is a model of the one in which Tony's father worked during the 'steam era'. Points and signals are operated manually, which simplifies wiring and improves reliability. Automated uncoupling is by modified DG couplings and electromagnets.

3mm scale is well supported by The 3mm Society and associated specialist traders, and a wide range of loco, coach, and wagon kits, as well as track components, are available to members. The operators are happy to discuss any aspect of 3mm modelling, and individuals are welcome to view operations behind the layout, space permitting.

Billton Goods appeared in *Railway Modeller* for September 2016; there have been some scenic alterations since then.



Kirkby-in-Ashfield (38F)

Stand: 21 (Hall 1)
Owner: James Cullen
Period: c. 1937–1947
Scale: OO (16.5mm gauge, 4mm:1ft/1:76 scale)

Kirkby-in-Ashfield (38F) is a relatively small GCR/LNER steam shed that could have been constructed in Kirkby (a few miles north of Annesley), had the GC arrived before the Midland Railway. The building is based on aspects of Leicester GCR, Woodford Halse, Annesley, and Retford sheds. The layout is built into a Tim Horn baseboard box, and the track is all Peco, but a mix of code 100, 75, and 75 Bullhead.

Everything is kit built, scratch built or very heavily modified, including all the locos, which are a mix of ready-to-run and kit built, but all modified, renumbered, or repainted, as well as weathered based on photographs. Most have been done by James' wife (Shona) who will be with him to answer questions. The main focal point is the shed building itself, which is fully detailed inside, even in the bits you can't see; but it's still worth peeking through the windows to see what you can spot through the glass. There's a variety of often overlooked details around the outside of the shed too. No prizes to win, but can you find the depot cat?



The layout is operating this weekend as around 'the war years' (c. 1937–1947), so there are lots of unkempt black locos. Look out for some unusual classes and regular visitors, and try and work out what is in for attention on the shear legs. The layout is analogue (DC) and is operated from the front, so please ask questions, share stories and have a chat with the operators as you pass by.

If you'd like to see more about how the model was built or some operating sessions, you can find it on YouTube: www.youtube.com/@JAMESDEMU-RailwayModeller.



Black Diamonds

Stand: 23 (Hall 2)

Owner: Black Diamonds (<https://www.black-diamonds.org.uk/>)

Period: 1950s–1970s

Scale: N (9mm gauge, 2mm:1ft/1:160 scale)



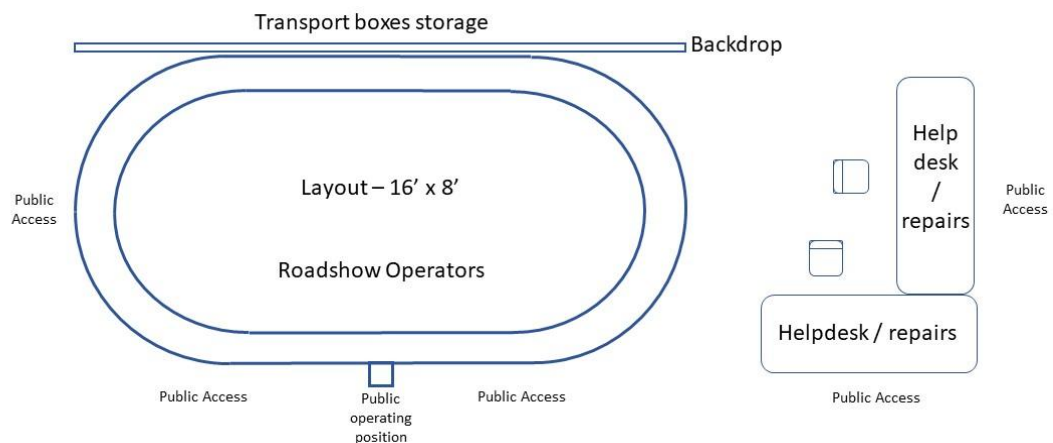
The Black Diamonds group are based in the East Midlands at Kegworth, modelling, among other layouts, an N gauge modular layout, which is what is displayed here, in a slightly different arrangement from previous displays. Modules that are on display for this show include a diesel motive power depot, Springfield grain terminal, a freight car works, Gordonstoun quarry, and a timber yard.

More information about this layout can be found here: <https://www.black-diamonds.org.uk/groups/n-scale/>.



OO Gauge Live Steam Roadshow

Stand: 24 (Hall 2)
Owner: OO Live Steam Club
Period: Unspecified
Scale: OO (16.5mm gauge, 4mm:1ft/1:76 scale)



The OO Gauge Live Steam Roadshow specialises in OO gauge steam engines that were made by Hornby but are no longer in production. This layout showcases these miniature marvels, which exhibit many of the foibles and fun of their full-size counterparts. With two independent circuits demonstrating the locos in action and a third circuit to 'have a go', the OOLS team offer an interactive experience for all ages.

For more information on the OO Live Steam Club, see <https://www.oolisteam.com>.



Zlata Východ

Stand: 27 (Hall 2)
Owner: Dave Paylor
Period: 2004–2007
Scale: HO (16.5mm gauge, 3.5mm:1ft/1:87 scale)



Zlata Východ is a fictitious HO scale layout based on a small Czech/German border crossing in the far north-west corner of the Czech Republic set loosely around 2004–2007. It comprises diesel and electric routes into each country, as well as a branch line at the Czech end. This means a variety of traction and workings from the

national operators of the Czech Republic (České Dráhy) and Germany (Deutsche Bahn) can be seen, as well as occasional services from nearby Poland (Polskie Koleje Państwowe). There are also workings in the hands of private freight operators, as well as preserved locomotives and stock from German, Czech, and Polish operators, to increase the variety on show.

The aim of the layout is to portray a typical (if slightly busier) border crossing of the time, when either the national operators' locomotives generally run round and head back, or cross-border trains will have a locomotive change before continuing forward, with the exception of some of the international private owner locomotives that will continue through. To add to the operational interest of the layout, there is also a terminus at the main station of a narrow gauge line using HOe scale dual gauge track running through the tunnel along the branch line; this is a relatively common practice in that part of the world. There is also a fuelling point with a couple of stabling roads, a small goods yard, and a preservation site based in the remaining section of a once much larger roundhouse. A separate siding serves a beer company, which uses its own locomotives.

For more information and photos, see the layout's Facebook: <https://www.facebook.com/profile.php?id=100069782442967>.



The Loop/Colwick Park TMD Weathering

Stand: 29 (Hall 2)
Owner: Paul Mulligan
Period: Mid-1990s to present day
Scale: OO (16.5mm gauge, 4mm:1ft/1:76 scale)



The Loop is a Work-in-progress exhibition build, designed to showcase some favourite examples of his weathering work for his home layout Colwick Park TMD. He will also be demonstrating some of the techniques he uses. So come along and ask some questions. Website: <https://www.facebook.com/ColwickparkTMD>.

Corporation Road

Stand: 31 (Hall 2)
Owner: James Rowland
Period: Late 1980s
Scale: OO (16.5mm gauge, 4mm:1ft/1:76 scale)

It's the late 1980s, Kylie is topping the charts, Sony Walkmans are everyone's must have accessory, the Cold War continues, Pac Man is being played in every amusement arcade, and British Rail is having the biggest shake up since nationalisation. The Birkenhead Docks branch on the banks of the River Mersey was in decline, but still had some traffic flows, including grain to the Rank's and Spillers' mills, coal to the Co-Operative depot at Birkenhead North, oil to the Pan Atlas terminal, steel, and general goods to the various warehouses. The line was the last bastion of Class 03 operation on the mainland, their lightweight design making them suitable traction for the tight radius curves in the Wallasey area. The 03s shared road space with the main A41 road in the Duke Street area, and could be seen bringing traffic to a standstill running down the middle of the road! This is a practice

that would be frowned upon in the health and safety conscious world we live in today!



The line saw a regular Target 68 Speedlink trip to Ellesmere Port and Warrington in the late 1980s, with a variety of wagons and a regular flow of grain to East Anglia using Grainflow Polybulks. Class 03s were used to shunt the wagons over the dock

network, larger locos being unable to be used due to their weight and size. Larger wagons such as Cargowaggons were pushed by the 03s and loose shunted. On the Wallasey side of the docks, a large digger was used to push the wagons in position for loading!

By the late 1980s the branch began to lose most of its traffic flows, accelerated by the closure of the Speedlink rail freight network. The last 03 finished in 1989. By 1993 the branch was mothballed, the last traffic being household coal to the Co-Operative depot. Until 2025 most of the line remained intact. Now some of the track bed is a shared cycle lane; however, from Canning Street to Rock Ferry the line is still extant, though very overgrown.

Locomotives seen on Corporation Road include all four of the last 03s used on the branch, 03073/162/170 and 189, all allocated to nearby Birkenhead North TMD, with the odd guest appearance of an Allerton or Chester based Class 08 for good measure. Classes 25, 31, 37, and 47 are regular traction, with the odd appearance of Classes 20, 45 and 56, as prototypically seen on the line.

Sowerby Station

Stand: 35 (Hall 2)
Owner: Adrian Walby
Period: Mid to late 1960s
Scale: O (32mm gauge, 7mm:1ft/1:43 scale)



Sowerby Station is the southern terminus of the Thirsk and Sowerby Light Railway, and the location of the engineering firm J D Metals. The layout is DCC controlled running a mixture of sound fitted steam and diesel locomotives to cover the period modelled, from Heljan, Dapol, and Minerva. The rolling stock is both ready-to-run and kit built. Track is Peco Streamline, with the points operated using the wire in the tube method. There are also working signals operated using servos. Many items for the buildings and scenic work have been scratch built with other items coming from FairPrice Models, 10 Commandments, and CM3 Models. The gates to J D Metals also open to allow deliveries and collections by rail.



Denton Sidings

Stand: 37 (Hall 2)
Owner: Jon Boot
Period: 1960
Scale: O (32mm gauge, 7mm:1ft/1:43 scale)

Denton Sidings is a fictitious layout drawing strongly upon Midland and Eastern Region influences. It is named after Jon's home village in Northamptonshire.

Inspiration for the layout came from the former Great Central Railway branch line that ran to the village of Gotham, which lies south of Nottingham.



The layout is set in the summer of 1960, and represents a typical small rural goods yard and a loop that serves the local factory of BGK Ltd. No-one is actually sure what is produced at the works, but there is a steady output from there that warrants many arrivals and departures of box vans.

Stock is from a variety of sources, including from proprietary manufacturers, and kit built and scratch built items. The collection has been assembled over a twelve-year period. Buildings too are from a similar variety of sources, and it is these Jon enjoys making the most. The layout boards themselves were started in 2020.

Wouldham's Chalk Pit

Stand: 38 (Hall 2)
Owner: Graham Clark
Period: 1960s
Scale: O (32mm gauge, 7mm:1ft/1:43 scale)



The layout represents a section of one of the Wouldham's chalk pits near Grays in Essex. There were a number of cement works spread along the River Thames, on both sides. This layout represents part of one of those works, the Wouldham's cement works in South Stifford. The chalk was quarried for the cement industry and was supplied to the cement works by means of a standard gauge industrial railway.

The layout came about as a result of Minerva Model Railways producing a 7mm scale model of a Peckett 0-4-0 industrial loco. This reminded the builder of his first sight of a train when he was shown the railway between the chalk pits and the works, passing under the bridge on London Road.

The model represents the chalk pit that was to the north of Mill Lane. The chalk to the south of the road had been worked out, and so tunnels were dug under the road to access chalk deposits to the north. The pits were dug in stages, and a new tunnel was dug for each stage. There were eventually four tunnels above one another under the road. The layout represents the second stage of excavation with just two tunnels under the road.

The railway closed in 1963 when it was replaced by a conveyor belt. The works closed in the 1980s and the pit is now a nature reserve near the Lakeside shopping centre, known as Chafford Gorges, which is sited among housing estates. The tunnels are still there today, and are bat roost protected by Essex Wildlife Trust.

The layout was built with visitor participation in mind and exhibition visitors are encouraged to drive the train and operate the working loading shovel.



Sheet Stores

Stand: 39 (Hall 2)
Owner: Jay Sanders
Period: 1950s/1960s
Scale: OO (16.5mm gauge, 4mm:1ft/1:76 scale)

Sheet Stores is a fictional location, which was built by the GNR for the repair and manufacture of wagon sheets. Under BR, their sheets were sent to all regions so trade was very brisk. By the 1970s, it had all but ended. The building was empty for years before becoming a shopping outlet.

The layout, the second to carry the Sheet Stores names, models the depot in the 1950s and early 1960s. Operation is DCC, with sound-equipped locomotives.



Ruddington Model Railway Club Layouts

Stands: 40–41

The Ruddington MRC club rooms can be found by heading further into the site, past the NABS shed. There is no entry charge for the RMRC layouts. They have a sales cupboard in their extension selling second hand rolling stock, which will be available on request. This weekend they will be running the three layouts in the main clubrooms, and the outside if there are enough volunteers.

There is also a small RMRC display in the Flying Scotsman marquee, with a static diorama. (This will only be accessible to those with tickets to travel behind *Tornado*.)

RMRC are running a raffle, with the prize being a Hornby *Flying Scotsman* set. Tickets are £2 each; for a book of five you also receive a free RMRC key ring. The raffle will be drawn on 30th August 2026. Tickets can only be bought by those over sixteen years of age.

Ruddington (main clubroom)

Owner: Ruddington Model Railway Club/Nottingham Transport Heritage Centre

Period: c. 1960

Scale: OO (16.5mm gauge, 4mm:1ft/1:76 scale)



Begun more than twenty years ago. Ruddington is the most popular layout among RMRC members for use, due to its size and versatility. The layout is a historically accurate reconstruction (with some compression) of Ruddington Station on the Great Central Main Line, as it would have been in the early 1960s, with the surrounding fields, housing and small industrial units (the latter of which have all now gone). There is a simplified version of the Royal Ordnance Depot on which the Nottingham Transport Heritage Centre now sits. All the buildings were scratch built, long before Bachmann introduced their GCR station buildings. Authentic coal and iron ore freight trains can be seen on the layout, if rather more frequently than would have been the case for the prototype.

However, members will also run anything from pre-grouping train to modern image sets, to take advantage of Ruddington's long straights and generous curves. Points and isolators are controlled from the control panel, with loco control either by DC analogue fitted on to the panel, or a separate DCC controller. The fiddle yard has manual points, and a separate set of isolator switches

Millhouse Lane (main clubroom)

Owner: Ruddington Model Railway Club Period: Early 1950s Scale: O (32mm gauge, 7mm:1ft/1:43 scale)
--



Millhouse is the RMRC's indoor O gauge shunting layout. It's an ex-Great Western Railway branch line terminus, set in the 1950s, based within a Cotswold village, with multiple industrial sidings coming off the line; you can find a brewery, a factory where welding is taking place, a timber yard, a goods shed and a cattle dock. There are plenty of houses for the villagers, plus the Station Hotel, a church with working church bells, and a river. There are a few anachronisms to be spotted, if you know where to look.

The layout was originally built to be set up in a home. When circumstances dictated it being put into storage, the RMRC was able to acquire it, though some considerable redesign was necessary to accommodate it into the space available. The buildings were all made by the late Allan Downes, using fire cement to mould the stonework. A few further modifications have been made in recent years to make the layout more suitable for viewing by small children.

Rolling stock typically consists of smaller BR locos such as panniers, Jintys, 14xx Class locos, and an ex-GWR railcar. As with Ruddington, RMRC members like to shake things up, so expect to see a variety of different locos and liveries on this layout. Control is via an analogue panel which includes an automatic shuttle.

Sodor (main clubroom)

Owner: Ruddington Model Railway Club
Period: Timeless
Scale: OO (16.5mm gauge, 4mm:1ft/1:76 scale)



Recently rebuilt almost from scratch, Sodor is, as the name suggests, RMRC's Thomas the Tank Engine & Friends layout, which they run to appeal to younger

visitors. It is mainly constructed with set track, and only Thomas & Friends locos and rolling stock are run on it. All the main characters can be seen, such as Thomas, Percy, Toby, James, Henry, and Gordon, as well as lesser-known figures such as Emily and Spencer. Harold the Helicopter and Bertie the bus can also be found. The main station at the front has Peco overall canopies, whilst many of the buildings came from a partwork magazine.

Control is analogue, but the whole layout can be switched on and off via a switch behind Ruddington, meaning it is not necessary to have someone to manually operate it.

Ellis Road (extension)

Owner: Ruddington Model Railway Club
Period: Contemporary
Scale: OO (16.5mm gauge, 4mm:1ft/1:76 scale)



Ellis Road is a small end-to-end OO gauge modern image layout located in the extension to the RMRC's main building, which extension also functions as their workshop. Ellis Road is the name of the TMD; the station is called Westley. It is currently a work in progress, undergoing refurbishment. When operating, viewers can expect to see modern privatisation era DMUs and locos shifting back and forth into the terminus, into the TMD or off into the hidden section towards their destination. Control for points and analogue loco control is via a panel at one end of the layout. DCC operation can be done with a separate DCC controller.

International Conference Centre (extension)

Owner: Ruddington Model Railway Club
Period: 2000s
Scale: N (9mm gauge, 2mm:1ft/1:148 scale)



The latest addition to RMRC's layouts, International Conference Centre is inspired by Birmingham International on the West Coast Main Line. It has Virgin Trains and East Midlands services, as well as Class 66-hauled freight services, as well as the occasional heritage special. The OHLE masts are modelled, but the wiring itself would be too thin to represent at this scale. Signals can be manually operated, or work automatically. Stock is standard ready-to-run, supplemented by members' own. Operation is analogue. Unfortunately, this will not be operating this weekend.

Barry's Island (outside)

Owner: Ruddington Model Railway Club
Period: Multi-period
Scale: Multi-scale

Recently refurbished with a new track layout, Barry's Island is the RMRC's outdoor multi-gauge oval circuit, the perfect place to play trains on a hot summers' day. It is mainly used for the RMRC's G gauge Thomas & Friends stock, though it also has two O gauge loops and a single OO gauge loop on the outside. All tracks are powered by an analogue controller inside the Barry Island shed. Live steam is also

occasionally run on the island. RMRC will unfortunately not be offering their popular 'Take Control of Thomas' this weekend. Operation of Barry Island is weather and volunteers permitting.



Societies & Demonstrations

Entrance Hall

Stand 1. Pay Desk and The LMS-Patriot Company. The builders of No. 5551 *The Unknown Warrior*. Website: <https://www.lms-patriot.org.uk/>.

Hall 1

Stand 22. DEMU. Diesel & Electric Modellers United: all about UK diesel and electric era modelling in any scale. Website: <https://facebook.com/demuuk/>.

Hall 2

Stand 30. Accurascale. Leading manufacturer of highly detailed models. They will have samples of their wide range of locomotives and wagons. Website: <https://www.accurascale.com/>.

Stand 32. Tony Wright's Loco Clinic. Tony shares his wealth of model-making experience and demonstrates how to repair broken locos. Bring your poorly loco for Tony to look at.

Traders

Hall 1

Stand 3. Anoraks Anonymous. Specialists in pre-owned British, European, and American outline model railway and diecast stock, and regular traders at NMRS shows. Suppliers of a wide range of second hand models at bargain prices. Website: <https://www.anoraksanonymous.net/>.

Stand 4. Buggleskelly Station — Scale Models by Tom Marshall. Tom is a professional model maker, and stocks a wide range of 3D-printed model railway items, inspired by film, TV, and literature, including items related to the Will Hay film *Oh, Mr Porter!* Website: <https://www.buggleskellystation.com/>.

Stand 5. Booklaw Publications. A wide range of books from Nottingham's local railway publisher, one of the UK's leading railway publishers. They are also a stockist of railway and other transport books from other publishers. Booklaw also stock an extensive range of CDs and DVDs. Website: <https://www.booklaw.co.uk/>.

Stand 6. Fenland Model Railways. Fenland Model Railways is a small independently run model shop based in rural Cambridgeshire. They deal primarily in pre-owned OO gauge model railways, and the various things that go along with them, such as road vehicles, scenic materials, track, etc. Website: <https://www.ebay.co.uk/str/fenlandmodelrailways>.

Stand 8. Skog Carriage and Wagon Works. Rob Law will be demonstrating 3D printing, showing how he makes O gauge wagons, and selling some of his kits. Website: <https://www.facebook.com/SkogCWW>.

Stand 13. Trainsporters. The home of innovative, stackable model railway storage boxes designed for every gauge of model train, including O, NG7, OO, HO, TT, and N. Tired of cardboard boxes or damaged models? Trainsporters' recycled plastic boxes with precision-cut foam inserts keep your collection secure, organised, and ready to run. Website: <https://trainsporters.com/>.

Hall 2

Stand 25. Sherwood Models. North Nottingham's local model shop, and now Nottingham's only model shop, with a wide variety of models. Website: <http://www.sherwoodmodels.co.uk>.

Stand 26. Bomber County Models. Lincoln-based model railway trader, dealing in pre-owned items, and specialising in kit built rolling stock. Also stocking diecast aircraft and road vehicles. Website: <https://www.facebook.com/profile.php?id=61563089160919>.

Stand 33. Nottingham Model Railway Society Club Second Hand Sales. The NMRS club's second hand inventory, and more, all offered for sale as seen—grab yourself a bargain!

Stand 34. TTC Diecast. Formerly Loughborough Model Centre, TTC stock a wide variety of rolling stock from all the major manufacturers, and a varied range of discounted model products. Website: <https://www.ttcdiecast.com/>.

Stand 36. CM3 Models. Specialists in scratch building supplies, tools, switches and scenic accessories for model railway layouts. Wire and connectors are available for DC and DCC layouts, and a number of wiring kits are available for beginners. Plastic section, MIG AMMO products, Expo tools, Model Scene, Albion Alloys, Alan Gibson and greyboard card packs also supplied. Website: <https://cm3models.co.uk/>.

Refreshments. The Heritage Café will be open both days serving breakfasts and lunches. Full roasts are available on Sunday. The shop also sells railway-related toys and souvenirs. Website:

<https://www.facebook.com/TheHeritageCafeRuddington>.

Other Transport Heritage Centre attractions open as usual

Nottingham Transport Heritage Centre is a working museum and heritage event centre in the middle of Rushcliffe Country Park, on the southern edge of Nottingham.



The Nottingham Society of Model and Experimental Engineers Ltd can be found opposite the RMRC club rooms. They have Gauge 1 (not open to the public), 3½-inch, 5-inch & 7-inch tracks, with rides on the last three from their Little Ruddington station, from 12.00 on Saturday and Sunday (weather and volunteers permitting). Website: <https://nsmee.org.uk/>.



The Great Central Railway (Nottingham) (<https://www.gcrn.co.uk/>) is operating. LNER Peppercorn A1 no. 60163 *Tornado* will be in traffic, operating from platform 1 for three trips between Ruddington Fields and Loughborough South Junction, departing at 11.00, 13.00 and 15.00. The last two of these will also include Cream Teas being served.



A3 no. 60103 *Flying Scotsman* will be on static display on platform 2, connected to the NTHC's Restaurant Miniature Buffet (RMB carriage). Footplate visits will be available only for those purchasing tickets to ride behind *Tornado*. Tickets will be available for purchase on the day (or previously via Fox and Edwards: <https://www.foxandedwards.com/events/view/tornado-steam-train-travel-with-model-railway-exhibition-nottinghamshire>) for the footplate visit and trip behind *Tornado*, and will include entrance to the Model Railway Exhibition. Ruddington Fields station can be found close to the main entrance to the site.

NABS – Nottingham Area Bus Society. NABS restores and preserves the history of local bus companies from documentation of historical importance through to full size vehicles representing the various companies in and around Nottingham. This weekend they have given up their main shed for the Model Railway exhibition, but many of their vehicles will be on display. Website: <https://www.facebook.com/NABSRuddington/>.

The Emporium shop, located close to the Heritage Café, sells railwayana, books, and occasional model railway items.

The Visitor Centre includes some information about the history of the site and the NTHC.

Rushcliffe Country Park covers approximately 210 acres, with walking trails, a lake, a play area, and other attractions.

The 2027 Nottingham Transport Heritage Centre Model Railway Show will take place on 29th and 30th May 2027.

But before next year's NTHC Model Railway Show is the Nottingham Model Railway Society 2026 Autumn Show, which will be on 19th and 20th November 2026, once again here at the Nottingham Transport Heritage Centre. Full details will appear here: http://www.nottingham-modelrailway.org.uk/?page_id=491. If you'd like to advertise in the Autumn Show Guide, please contact exhibadmin@nottingham-modelrailway.org.uk

NOTTINGHAM

Model Railway Society

AUTUMN SHOW

2026



Top quality layouts plus trade support

Saturday 19th September 10.00am – 5pm

Sunday 20th September 10.00am – 4pm

Nottingham Transport Heritage Centre, Mere
Way, Ruddington, Nottingham NG11 6JS

Admission £7 Accompanied under 16s FREE

www.nottingham-modelrailway.org.uk

www.ukmodelshops.co.uk

 www.facebook.com/NottinghamMRS



Major debit cards accepted

Interested in joining the Nottingham Model Railway Society?

Nottingham Model Railway Society is always open to new members. We are an active group of modellers who are based in the Nottingham and surrounding areas. We have our own club rooms in the Mapperley area to the north of Nottingham city centre. As well as our big layout, Trent Lane Junction (OO), a recreation of ex-Midland and ex-GNR lines in east Nottingham, we also have other layouts in a variety of scales.

The diesel and electric scene is represented by two large layouts. Deepcar (OO) portrays the electrified Woodhead line in the 1960s and 1970s and features authentic, working, near-scale overhead line equipment depicting the 1500V DC system. Streatham Mainline (OO), being refurbished at this time, depicts a suburban London station in the 1980s and 1990s, with Network SouthEast trains as well as freight services and a London Underground line. This layout features third rail DC electrification.

We also have an O gauge layout, Market Witham, based on former GN lines in Lincolnshire, featuring scratch built buildings based on those at Louth. There are also club layouts in OO9 (Cwm Hapus) and N (Oxthorne). For those interested in North American railroads, we have an HO layout, Springfield, to be refurbished for exhibition in 2027.

Members' interests and knowledge cover many aspects of railway modelling and we are happy to offer help and advice. The society has a comprehensive library with many useful reference books.

Interested? To find out more please ask one of the Stewards or visit our website: www.nottingham-modelrailway.org.uk. Or complete the application form and send us a copy to sec.nmrs@yahoo.co.uk.

If you'd like to book any of our layouts for your show, or any of the members' layouts listed on our website (https://www.nottingham-modelrailway.org.uk/?page_id=170), drop us a line at exhibadmin@nottingham-modelrailway.org.uk. Also contact us here if you'd like to offer your layout for one of our future exhibitions.



Nottingham Model Railway Society (Est. 1971)

www.nottingham-modelrailway.org.uk
sec.nmrs@yahoo.co.uk



Application for membership

First name..... Surname.....

Address.....

.....

.....

Post Code.....

Telephone Number.....

Mobile.....

E-mail Address.....

Please give us a brief insight to your modelling experience (If applicable) and what sorts of things you are interested in learning and what scales and time period of modelling interest you.

.....

.....

.....

.....

.....

Your application will be considered at the next committee meeting and you will be notified by the club secretary. Subs are currently set at £96 per year starting 1st June; subs will be broken down into monthly instalments (£8 per month) to the next June anniversary. Should you join as a member your details will be kept by the club treasurer and will not be passed to any third parties in accordance with GDPR laws 2018.

Signed..... Date.....

Nottingham Model Railway Society Est. 1971

OPEN TO THE PUBLIC

RUDDINGTON MODEL RAILWAY CLUB

MODELLING NOTTINGHAMS RAILWAYS SINCE 1992



Most Weekends & Bank Holidays

Find us at Nottingham Transport Heritage Centre (NTHC), Mere Way, Ruddington, Nottingham, NG11 6JS

Many layouts of various gauges to see, including a recreation of Ruddington (Great Central) as it was circa 1960, in OO/4mm scale, plus a Thomas and Friends layout for the children.

Regular Take Control sessions for children on our G Gauge outdoor railway.

Second hand club shop for good value models and rolling stock. Just ask a club member to see the shop.

Refreshments available at the Heritage Café on site.

New members always welcome.

Search for us on Social Media to keep up with what's going on.



<https://www.facebook.com/ruddingtonmodelrailwayclub/>

<https://www.instagram.com/ruddingtonmrc/>



*See you next year, 29th/30th May
2027!*

<https://gcrn.co.uk/events>